



4-H CLIPBOARD



**April/May
2006**

Donohoe Center, 214 Donohoe Road Suite E
Greensburg, PA 15601-9217

Telephone: (724) 837-1402
Fax: (724) 837-7613

SEND US YOUR OFFICERS !

Please join us on May 3, 6:30 p.m. at the Extension Office for Officer's Training Night. This night is a great way for club officers to learn the details of running a meeting and handling the specific duties of each office. Participation certificates and incentive rewards will be given to each club that participates. Also this night, you will have the opportunity to participate in some fun and interactive team building activities! Even if you're not a club officer, you are welcome to attend and represent your

club. Please call the Extension Office and let us know if your club will be attending.



*Don't miss the
4-H Officer Training
May 3, 2006*

The next Westmoreland County 4-H Board of Directors meeting is scheduled for May 4, 2006. If you have items to add to the agenda, please contact the Extension office .



**Mark Your
Calendars**

- Dog Leader Meeting
April 19, 2006
- 4-H Officer Training
May 3, 2006
- 4-H Board of Director Mtg.
May 4, 2005
- Livestock Weigh-In
May 20, 2006
- *Modeling Workshop for
Textile Science Members*
May 23, 2006
- County Presentation Day
May 30, 2006

LET'S GET HOPPING !

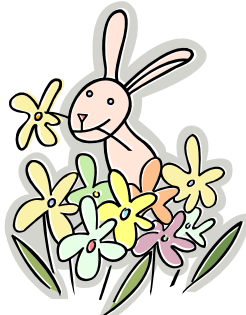
The 2006 Rabbit Bowl team is forming. . . .

All interested rabbit project members are invited to train for the Westmoreland County Rabbit and cavy team. The meetings will be held the 3rd Saturday of the month at the Alwine Civic Center on Route 66 just about 1-2 miles north of Greensburg, PA. If you

really want to know about rabbits, then this is the place you will want to be! If

you're interested you can contact :

Shari Wright
724 834-7448



Special points of interest:

- ♦ *Grow a Fish Sandwich at SW Regional Camp*
- ♦ *Westmoreland Co. Members Attend State 4-H Capitol Days*
- ♦ *Join the Plant a Row Competition*
- ♦ *Updated Opportunities for the Westmoreland Fair*

COUNTY PRESENTATION DAY...JOIN THE EXCITEMENT

This year the county presentation contest will be held May 30, 2006 at the Extension office. All 4-H members are invited to showcase their communication skills. The contest will begin at 6:00 p.m. We will again have both a senior and junior division for presentations



Brush up on your public speaking skills.

(demonstrations that use props), public speeches, impromptu presentations and a theatrical interpretation. The same time frames as public speeches will be utilized for the theatrical interpretation. Reservations are due by May 23, 2006. Money awards will be given to the high scoring participants. Send in the enclosed reservation form today.

4-H Dog Leaders Annual Planning Meeting

The Annual meeting will be held on April 19 at 7:00 p.m. at the Extension office. Plans for the 2006 Dog Program and Round-up will be discussed. Interested teens and parents are invited to attend also. Contact Bonnie (724) 837-1402 if you will be attending.

MOOOO. . .COW CAMP AND YOU'RE INVITED

The Penn State Dairy Science Club will be holding its second annual Dairy Days Cow Camp on May 19-21, 2006. This year's event will include (but is not limited to) workshops in fitting, nutrition, genetics, promotion, and animal health. The workshops will be led by industry professionals as well as PSU Dairy Science Club members. We hope to draw juniors from all over

Pennsylvania and build on the success of the Junior All-Breeds Convention. Any 4-H member, between the ages of 8 and 18, is welcome to attend. Last year, we were thrilled to have around 85 students for the first year, this year we hope to have an even better response. Registration forms will be mailed upon request, and also can be picked up at various places. The forms

are available through the Extension office and the turn-in deadline is April 28, 2006. Contact the office for more information.

FASHION REVUE MODELING WORKSHOP



There will be a Fashion Revue Modeling Workshop on Tuesday, May 23, 2006 from 6:30—9:00 p.m. at the Donohoe Center.

This year we will not be having a County Fashion Revue, but we will have a modeling workshop to help participants prepare for the Regional Fashion Revue. This year the Regional Fashion Revue will be held on Tuesday, June 27, 2006 at Seven Springs. Registration information will



be mailed to all Clothing and Textile members and leaders.

Plant Another Row for the Golden Zucchini Award Challenge. . . Again !

As you plant those spring seeds for summer produce, plant a few more plants to help the Westmoreland County Food Bank. Again this year the coveted Golden Zucchini Award is up for grabs to the 4-H club that contributes the most pounds of fresh produce to the Food Bank through this summer until October 15. Contributions can be brought to the office. Take the challenge and register your club by July 1. For more information contact our teen chairperson, Nadine Summy at (724) 424-5362.

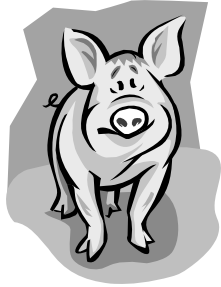
LIVESTOCK MEMBERS CIRCLE MAY 20, 2006

All market lamb, hog and goat project animals must be ear tagged on May 20, 2006 at one of two locations in the county, either at Derry Area High School or Westmoreland Fairgrounds between the hours of 9:00 a.m. and 2:00 p.m. If you want to be considered for the Daily Rate of Gain Contest, you must have your animals weighed that day. Participation in the daily rate of gain contest is your choice, but you must have your animals either ear tagged or tattooed that day! This is new this year so your



cooperation is necessary. If you have trouble getting your animals hauled contact Dustin Heeter or one of the Jr. Livestock Show

and Sale Committee members. *County and Homebred animals must be identified at this time also!*



ARE YOU THERE YET?

Horsemanship is a set of standards that demonstrate knowledge and skill between you as a rider and your horse. The four levels of horsemanship build upon each other and move you and your horse through a mastery of skills. Level I begins with basic information and we in Westmoreland County want to make it

as easy as possible for a member to pass this level. Level I reviews will be held at the club level by three certified reviewers. Talk with your club leaders about setting up a review session. Level II reviews and possibly some Level I will be done on Thursday, June 22 and July 27 at the Westmoreland Fairgrounds in the horse ring area.

OBSTACLE TRAIL...FOR FUN OR COMPETITION

Horse Clinic
April 27, 2006

Come to ride or just to learn at the Westmoreland County Trail Horse Clinic on Thursday, April 27, 2006 at 6:30 PM at the Westmoreland Fairgrounds. The cost is \$5.00 to ride and \$2.00 to watch. The clinician of the evening is 4-H Horse Leader Scott Kelly. In addition to his years of developing trail courses and training horses to handle those obstacles, he also serves as trail steward at the PA State 4-H Horse Show.

Set your goals and pass those skill levels, put your name in the Westmoreland County 4-H Horse History Book! Remember horse production members under the age of 12 must pass Level I skills before they show at the area production show on July 25, 2006.

GROW A FISH SANDWICH AT 4-H CAMP

Come to four days of fun filled activities and make new friends at the SW Regional 4-H Camp, June 18-21, 2006 for youth ages 8-12. Camp is held at the Laurelville Mennonite Center in Mt. Pleasant, PA. A great week of activities that make you want to eat and make you wonder why we eat the food we do! Come to camp and learn about why it happens. . . food, fiber and the great outdoors. This is rolled around campfires, skits, nature study and cabin

fun which make 4-H camp the place to be this summer! The cost is \$120.00 which includes all camp expenses, meals and swimming. The 4-H Development Fund will pay \$20.00 for each 4-H'er who attends.

So your cost will be
The registration form will be mailed to members age 7 to 11 years



4-H age. After your registration is received you will be mailed an information packet with more details. Each family will be asked to return an income eligibility form from the PA Department of Education. Income need not be disclosed, but please return the form to us as this helps to supplement the food cost for camp and helps us make really yummy meals! Thanks in advance for your help with this.

UPDATED OPPORTUNITIES FOR THE 2006 FAIR

As new members are enrolled and select project work, here are some classes that have been added or changed for the fair. Specific details about classes will be in the 2006 fair book. The following indicates additions to the 4-H classes. Please remember that a 4-H member may enter two non livestock project entries without the entry fee.

Cat Lovers ...here it is. To provide an exhibition opportunity for those carrying the cat project, a basic cat show with showmanship will be added to the pet showcase.

New **Leadership Projects** can exhibit posters on a picture story of leadership experiences, display on leadership styles, community service leadership and a scrapbook or portfolio of your leadership experience.

Scrap booking Stamping techniques added bookmarks or gift tag, simple gift card, any other item utilizing two stamping techniques.

Ceramics added pre-cast mold or green ware either glazed or stained finish.

Jewelry- beaded; bracelet, necklace, earring.

Knitting and Crocheting- Knitting; purse, scarf, socks. Crocheting; scarf.

Microwave Cookery- fudge, peanut brittle, cupcakes or brownies and bar cookies.

Leisure Education Camping Adventure Poster or Display 14"x22"
Equipment or Gear for three day outing, appropriate camp shelter, six knots used in camping, sample camp menu, first aid kit, environmental

principles of camping and picnicking, parts of a compass.

Wildlife- Three plaster casts of wildlife tracks was added.

Veterinarian, Animal Science, Pet Care- Poster 14"x22"

Cats- Breeds, body parts of the cat, characteristics of different cat breeds.

Dog-Diagram of body parts, Dog behaviors and/ or breeds and their origins.

Entomology

5. Fifth year- 125 insects of 5 orders, 10 larvae of 3 orders.

6. Sixth year and up -125 insects of 5 orders, 10 larvae of 3 orders and the lifecycle of one insect.

7. Sixth year and up—A special collection of a specific insect group. The collection must be labeled to identify the unique insect type (aquatic, nocturnal etc).

Photography

Camera Book A - minimum of 15 of your best black and white or color prints divided into the following areas with at least: 3 pictures of the same person shot at distances of 2 feet, 6 feet and 15 feet; 3 pictures of hobbies or 4-H or FFA projects shot at 3 different angles (1 at low camera, 1 level angle and 1 using a high camera angle); 2 pictures of landscapes (1 showing vertical composition and one showing horizontal composition); 2 flash pictures; 2 pictures of animals; 2 pictures of events one photo story using 3 or more photos. All photographs should be 4x6, labeled and mounted in an album or binder.

Camera Book B- minimum of 30 of

your best black and white or color prints divided into the following areas with at least: 3 pictures showing lighting angles (1 picture showing front lighting, 1 showing back lighting and 1 showing side lighting) 3 pictures of the same landscape under 3 different lighting conditions; 3 indoor flash pictures; 3 action pictures (1 low camera angle, 1 level camera angle, 1 high camera angle) 1 photo story of a 4-H activity that uses a minimum of 6 pictures. All photographs should be 4x6, labeled and mounted in an album or binder.

Arts and Crafts- Palette of Fun add pencil and ink drawing and watercolor and acrylics painting.

Bicycle Obstacle Course Three age divisions 8-10 years of age, 11-13 years of age and 14 and older. 14" X 22" Poster-helmet safety, parts of a bike.

Thank the fair board directors for their cooperation to add these opportunities for 4-H members to participate at the fair.

Horse Members Alert!
Don't forget! Horse identification and health certification information is due to the Extension office by June 1, 2006.

HIPPOLOGY NIGHT BRINGS OUT THE BEST

Congratulations to the best of the best at the county Hippology Night. 4-H horse members tested their knowledge of horse science and horsemanship skills. Here are the members who excelled that evening.

Clover buds

1. Jordan Miller, Trailblazers
2. Samantha Dickson, Laurel Mt.
3. Sarah Kalp, Trailblazers
4. Kelie Jacob, Salem Saddle Club
5. Abigail Welch, Trailblazers
6. Anthony Buskirk, Trailblazers

Therapeutic

1. Jared Welch, Trailblazers

8 Year Old

1. Jessie Petronie, Hoofbeats
2. Christopher Butcher, Salem Saddle Club
3. Aleeah Sheedy, Trailblazers
4. Madison Herrle, Trailblazers

9-10 Year Old Easy

1. Keegan Miller, Trailblazers
1. Victoria Goldsworthy, Brush Creek
2. Allison Geshinsky, Covered Bridge
3. Hope Buskirk, Trailblazers
4. Sarah Johnson, Trailblazers
5. Nicole Dickson, Laurel Mt.
6. Sara Rowe, Brush Creek

9-Year Old Difficult

1. Shelby Kalp, Trailblazers
1. Alexxys Sheedy, Trailblazers
2. Rachel Bitsko, Hoofbeats
3. Cayla Cahill, Laurel Mt.
4. Sarah Masciantonio, Hoofbeats
5. Morgan Rohm, Trailblazers
6. Emily Verner, Hoofbeats

10 Year Old Difficult

1. Lauren Androstic, Covered Bridge
1. Sarah Wolinsky, Hoofbeats
2. Alexandra Sheffler, Salem Saddle Club
3. Meghan Biller, Trailblazers
3. Allison Frye, Laurel Mt.
4. Tessa Ives, Blazing Saddles
5. Melanie Loughner, Hoofbeats
5. Kathryn Jacob, Salem Saddle Club
6. Hanna Beaufort, Hoofbeats

11-12 Year Old Easy

1. Kaylee Simpson, Blazing Saddles

1. Laurie Anderson, Blazing Saddles
2. Crystal Larimer,
3. Amber Rhodes, Harrold Alwine
4. Leah Kasony, Blazing Saddles

11 Year Old Difficult

1. Rachel Sheffler, Salem Saddle Club
2. Amanda Kowalczyk, Salem Saddle Club
3. Jenna Gardner, Hoofbeats
3. Matthew Dickson, Laurel Mt.
4. Abby Burkhardt, Hoofbeats
5. Steven Antolovich, Hoofbeats

12 Year Old Difficult

1. Kerri Zelenak, Trailblazers
1. Rachel Wolinsky, Hoofbeats
2. Brooke Hebrank, Trailblazers
3. Brittany Coles, Brush Creek
4. Christina Bruno, Flour Bag Fort
5. Rebecca Welch, Trailblazers
5. Meridith Monsour, Hoofbeats
6. Nicole Smouse, Covered Bridge

13-14 Year Old Easy

1. Megan Johnson, Trailblazers
2. Julie Lynn Tuttle, Salem Saddle Club
3. Elizabeth Panzo, Covered Bridge
3. Lauren Russak, Blazing Saddles

13 Year Old Difficult

1. Ashley Roberts, Trailblazers
2. Jillian Masciantonio, Hoofbeats
3. Sarah Geshinsky, Covered Bridge
4. Justene Testa, Harrold Alwine
5. Krystal Wallbaum, Harrold Alwine
6. Lauren Johnston, Salem Saddle Club
6. Alana Nestico, Hoofbeats
7. Katie Salisbury, Covered Bridge
8. April Woleslagle, Blazing Saddles
9. Bethany Sweitzer, Hoofbeats

14 Year Old Difficult

1. Marissa Rega, Trailblazers
2. Sarah Hendricks, Hoofbeats
3. Anna Frye, Laurel Mt.
3. Alexandra Gredence, Laurel Mt.
4. Lacey Petika, Laurel Mt.
5. Devin Quidetto, Harrold Alwine
6. Autumn Bower, Hoofbeats
7. Audrey Antolovich, Hoofbeats

15-16 Year Old Easy

1. Mary Cheripka, Blazing Saddles
1. Jill Rowe, Brush Creek
2. Caitlin Zakutney, Trailblazers

15-16 Year Old Difficult

1. Lyndsey Androstic, Covered Bridge
2. Allison Neevan, Hoofbeats
3. Jodi Lenhart, Laurel Mt.
4. Natalie Roberts, Trailblazers
5. Jillian Manning, Trailblazers
5. Carol Landkrohn, Flour Bag Fort
6. Andrea Bruno, Flour Bag Fort
6. Rebekah Baker, Harrold Alwine

17-18 Year Old Difficult

1. Amanda Pritchard, Trailblazers
2. Maddy Begonia, Brush Creek
3. Elizabeth Wise, Harrold Alwine
4. Sarah Bousfield, Hoofbeats

Adult Difficult

1. Michelle Sinsabaugh, Trailblazers
2. Josh Lauffer, Trailblazers
3. Kim McGinnis, Trailblazers
4. Lisa Ives, Blazing Saddles
5. Charmaine Landkrohn, Flour Bag Fort
6. RaeAnn Sheedy, Trailblazers
7. Karen Murry Zitterbart, Salem Saddle Club



County Horse Drill Team ...wants YOU!

Join the county horse drill team and learn to ride in formation to music with other 4-H Horse members. This is really a test of skill and control for both the horse and the rider. Come join, our next meeting is April 23 at the fairgrounds. Contact Jennifer and Mark Lucas at 724-238-9897.

4-H AGE LOWERED TO 5 YEARS OLD

We have recently been notified by the State 4-H Office that 4-H age is now ages 5 to 18. What does this mean to you? At the moment, probably not much. The change was made for several reasons: there is an official curriculum available for this age group through the Cloverbud program, we want to reach out to children before they join other organizations and we

want to reach children this age with after school programs. Remember 5 to 7 year olds may not participate in any program involving large animals and are not permitted to compete in any kind of event. Activities must be age appropriate. The Cloverbud curriculum is available at our office for review.

SHOW FOR POINTS SIGN UP

The Junior Horse Show Committee representatives are collecting show for points sign up registration NOW! The cost is \$15.00.

EXPERIENCED TEENS NEEDED

Solve the crime at the **Multi-County 4-H Horse Camp:CSI**. Horse members who are 13 and older are

encouraged to serve as counselors for this year's horse camp, June 25-28, 2006. A



counselor helps members care for their horses, teaches stable management practices and has fun! Teen counselors are an essential part of a successful horse camp. Contact the Extension office or horse camp chairperson, Chris Buckley (724) 387-1175, if you would be willing to help. Riding instruction and counselor

training will be held June 18-20, 2006. Both counselor camp and full camp are at the Westmoreland Fairgrounds.

4-H DAIRY AND LIVESTOCK BREEDING ANIMAL LEASING

The intent of the 4-H animal leasing program is to provide opportunities for 4-H dairy or livestock project involvement of youth who:

- lack financial resources needed to purchase and care for an animal
- lack facilities and equipment necessary to provide proper daily care for a large animal
- are prevented from participating in project experiences requiring ownership and daily care of a large animal due to circumstances beyond their control

Breeding animals owned and housed by a sponsor are leased by 4-H members for the project year. A schedule for sharing with the owner in the care and training for each animal is developed and agreed upon. 4-H members may exhibit leased animals only at 4-H shows permitting showing of leased project animals. A project plan needs to be completed for each leased animal and returned to the Extension office with animal identification. Even if your lease agreement is verbal we still need a project plan on file in the office for each leased animal by May 1, 2006. For more information on the leasing

program call the Extension office at 724 837-1402.

PA STATE 4-H CAPITOL DAYS

Visiting the capitol, meeting with legislators, debating legislation, learning first hand about state agencies and having fun describe the 2006 PA State 4-H Capitol Days. Just ask Christina Potts, Rachel Lute, Craig Blystone, Lauren Hill, Mike Frescura, Rebekah Baker and Jen Ganassi who will represent Westmoreland County 4-H'ers at the PA State 4-H



Do you have an interest in learning more about our government?

Capitol Days. We hope that they will all learn how important it is to vote. Thanks to Bob Frescura for chaperoning the trip.

Hoorah For 4-H Spirit!

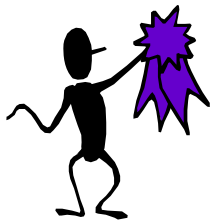
Members were challenged to show their 4-H spirit during PA 4-H Week and we have 14 members who wore their 4-H T-shirts everyday to school during 4-H week. Thank you to our 4-H ambassadors, Joseph, Marianna, Maria and Philomena Parrish, Marla Sacks, Amber Withrow, Rachel Cline, Jodi Musick and Devan Dudley. Each member received a 4-H reward for their efforts.

4-H TEENS "GIT R DONE"

It's history now but the 2006 Teen Leader Retreat was a great time for 70 some teens from Westmoreland County and another 100 from the surrounding counties in our Region. We had many workshops to choose from and they got great reviews. The evaluations indicated that teens brought home new skills and plan to use those skills in their club or community organizations. Good work

committee members! Also included in the weekend was country singer, Adam Tucker, team building activities, dancing and lots of networking. If you would like to be on next year's planning committee you can contact the Extension office and get on the list.

MEMBERS TAKE THE CHALLENGE AT SPRING JUDGING



Congratulations to all who participated!

Westmoreland County 4-H Livestock and Dairy members met the challenge at the Penn State Dairy Science and Block and Bridle Club Spring Judging Contests. Livestock judging had three teams of members from Westmoreland County. The senior team was comprised of Jacob Logan and Josh Ebert, J.J. Himler, Kelvin Nelson, and Bill Ebert. The junior teams

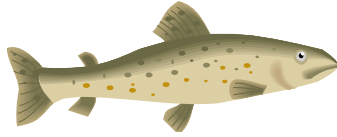
consisted of Cody Torock, Jessica Himler, Kelvin Nelson, Heather Sullenberger, Carrie Hyduke, Josh Shugars, Nat Stas, Dylan Marks, Rachel Cline, Gavin Teragawa, Hannah Zundel and Jason Hilty. The seniors and juniors placed in the top half of their respective classes. Also this year 4-H dairy members Mike Frescura, Breanna Smith, Jonathan Ebert and Shannon Ebert participated in the very competitive dairy judging contest.

We forgot to mention in the last clipboard that Joey Espey & Kelvin Nelson exhibited market hogs at the 2006 Farm Show.



4-H WILDLIFE AND FORESTRY FIELD DAYS COMING

The Wildlife Field Day is scheduled for Saturday, April 22, 2006 from 9:30 a.m. to 3:00 p.m. at Rock Springs, near Penn State. Eight to eleven year-olds will do the "Fascinating Fish" track where they will learn about Pennsylvania's fish and their habitats. The 12-18 year olds will participate in the Pennsylvania 4-H Wildlife Habitat Evaluation Contest. Youth attending in this age group will need to download a study book from <http://pa4h.cas.psu.edu/wildlifefd.html>. Four contestants will be selected to



PA 4-H Wildlife Field Day, April 22, 2006

attend the 2006 National Wildlife Evaluation Event. If you are interested in participating, contact the Extension office by April 18, 2006 to register.

The Forestry Field Day will be held on Saturday, May 6 from 9:30 a.m. to 3:00 p.m. at the Laurel Haven Conservation Education Center near State College. Eight to Eleven year olds will explore tree identification, compass use and tree measurement in the "Trees and Me" track. Older 4-H'ers can compete in a forestry judging contest. Teens participating in the contest will have to download a

study guide from: <http://pa4h.cas.psu.edu/forestryfd.html>
The top four winners will attend the National 4-H Forestry Invitational. Contact the Extension office by May 1 to register.

**UNITED WAY
OF
WESTMORELAND COUNTY**

If you are giving to the United Way this year, please consider giving to the agency program listing Westmoreland County 4-H as a designated donation agency.

CLUB TREASURERS. . . . CHANGES

With passage of the Patriot Act, some banks have developed new guidelines for signature cards. In many cases, the banks require picture identification which many youth do not have. Youth have therefore been unable to sign the bank signature cards and be a signer of 4-H club checks. When this occurs, two unrelated adults may be signers on the

card. It is suggested that at least one of the adults is a 4-H club leader. The other may be a parent. The club treasurer should still be approving expenditures before checks are written. If the bank in your area is still allowing youth signatures then the treasurer and

unrelated adult may still be signers on the bank card.

SMOKE FREE BANNER HANGS AT COURTHOUSE

The Westmoreland 4-H County Council Teens Against Tobacco Use (TATU) created a banner that is now on display at the County Courthouse in Greensburg. Several other T.A.T.U. groups added a few more footprints so this is truly a county wide effort. The banner displays 54 sets of footprints, each bearing a handwritten message from a young person about tobacco. The 54 represents the number of Pennsylvanian's that die every day from tobacco use. If



you are in Greensburg, visit the Courthouse and see the banner. It will be on display through May 31, World No Tobacco Day. Also in honor of the TATU program, the County Commissioners will issue a tobacco free proclamation at their May 25 public meeting at the courthouse. Great job to all 4-H TATU members!



4-H Club News



Alwine Community 4-H Club

At our March meeting, members who attended Teen Leader Retreat and Livestock Judging reported on their experiences and Mrs. Belak and Mrs. Turner reported on the Leader Symposium. Jolene Belak distributed brochures she had made up for 4-H Recognition Week describing 4-H, our club and encouraging new members to join 4-H. We also held our Club Elections. The new officers are: President-Mike Frescura; Vice-

Mt. View 4-H Club

Mt. View 4-H Club had their first organizational meeting for 2006. Club officer elections were held. The officers for 2006 are as follows: President, Marla Sacks; Vice President; Cody Torock; Secretary, Kristina Potts; Treasurer, Robyn Wright, News Reporters, Carly Marsh and Amanda Adams; Photographers, Kyle Potts and Danielle Roland; Social Chair Committee, Madalyn Begonia, Chelsea Marsh and Jason Roland.

President-Crystal Iman; Secretary-Breanna Smith, and Treasurer-Timothy Panzigrau. After the voting, Mrs. O'Hara gave a demonstration of cake decorating. Members participated in a team-building contest led by Mrs. Belak and Mrs. Turner. Next month, club directories will be available and Mrs. Schmider will give a demonstration of Entomology.

Timothy Panzigrau, News Reporter

We also chose five people for the Scrapbook committee. There were over 60 families present at the meeting. Two community service projects were decided upon, food will be donated to the Pleasant Unity Meals on Wheels and a fairground clean up project.

Carly Marsh, News Reporter

New Alex Ag Club

The New Alex Ag Club has begun meeting for 2006. The old club members welcomed the new members and a discussion was held on this year's agenda. The following officers were elected: President, Sarah Penich; Vice President, Billy Schachte; Secretary, Beth Weber, Treasurer, Amanda Dias; News Reporters, Jacob Penich and Shannon Herdman and Game Leader Joshua Shugars. The club congratulated Jason Hilty on his fantastic win with his Market Hog at the 2006 PA Farm Show.

*Jacob Penich & Shannon Herdman
News Reporters*

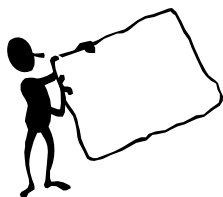
Salem Saddle Club

The Salem Saddle 4-H Club has begun meeting for 2006. The Club elected officers, President, Matt Kepple; Vice President, Nathan Pollard; Secretary, Lauren Johnson, Treasurer, Rachel Sheffler; News Reporter, Lydia Kepple; and JHSC Representatives, Matt and Jesse Kepple, Nathan Pollard and Rachel Sheffler. Committees were also elected for Scrapbook, Photographer and Snack. A discussion was held on having a sub sale and holding a clinic.

Two members shared their demonstrations and we closed the meeting with a riding session.

Have your club news published in the Clipboard. Contact Bonnie at the Extension office. (724) 837-1402

State 4-H Poster Contest



The 4-H Poster Contest is designed to publicize 4-H work and allow 4-H'ers to use their

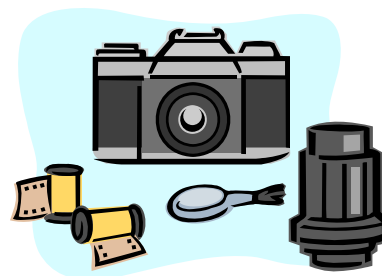
artistic talents. The top posters from the county will be sent to Penn State for state competition. Anyone wishing to enter a poster should call the Extension office for rules and details

The posters will be due in the Extension office on June 1, 2006.

State 4-H Photography Contest

Photograph your projects, friends, family or pets and enter your pictures in the State 4-H Photography Contest. (You do have to be in the photography project.) Contest is limited to one entry per member. Entries may be black

and white or color photos. They must not exceed 8" x 10". Your name, age, address, county and a short caption must be attached to the photo. Deadline for entries is June 1, 2006.



State 4-H Small Animal Essay Contest

Do you have a small animal project? Why not write an essay about your experiences? It could be a dog, cat, rabbit or other pet care project. The title of the essay should be "What I Have Learned in my 4-H Small Animal

Project" and the top essays from the county will be sent to Penn State for state competition. The deadline date is June 1, 2006.

Waynesburg Sheep & Fiber Fest Photography Contest

Waynesburg Sheep and Fiber Fest invites all photographers to participate in our 3rd annual Photography Exhibit and Contest. All entries must relate to rural Pennsylvania and the categories are: People, animals, pastoral scenes, still life and youth (any photo taken by someone 28 years and younger). Photos along with the entry form must be dropped off in Waynesburg between May 1-2, 2006. For more information contact the Extension office.

Westmoreland County
Cooperative Extension
Donohoe Center
214 Donohoe Road Suite E
Greensburg, PA 15601
724-837-1402



<http://westmoreland.extension.psu.edu>



~ The Value of Volunteer Time ~

Michael Martin

The Independent Sector has posted its calculation of the per hour value of volunteers for 2005—\$18.04. This is up from the 2004 figure of \$17.55. More information on volunteering in the US may be found at:
<http://www.independentsector.org>.

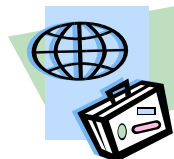
In December the Bureau of Labor Statistics released its latest information on volunteering in the US in 2005. Their survey shows that 65.4 million people volunteered, about 28.8% of the population. This was basically unchanged from 2003 and 2004. The full survey results may be found at:
<http://www.bls.gov/news.release/volun.toc.htm>.

This is another way to demonstrate the return on investment 4-H provides to our communities. The value of our public sector support is multiplied many-fold when you account for the value of our volunteers.

Sincerely,

Joann E. Logan
Extension Educator, 4-H/Youth

Cindy K. Arblaster
Extension Educator, 4-H/Youth



Host Families Needed

The Westmoreland County 4-H Travel All Club will be hosting a group of 4-H'ers from Oregon, July 25 through August 4, 2006. We are still looking for families to host our guests. We need four boys and two girls in the eighth grade age bracket. If you're interested, please contact 4-H Leader Betty Harr at (724) 423-3066.

The next Travel All meeting is April 26 at 7:00 p.m. at the Extension office.

Pennsylvania State University is committed to the policy that all persons shall have equal access to programs, facilities, admission, and employment without regard to personal characteristics not related to ability, performance, or qualifications as determined by University policy or by state or federal authorities. It is the policy of the University to maintain an academic and work environment free of discrimination, including harassment. The Pennsylvania State University prohibits discrimination and harassment against any person because of age, ancestry, color, disability or handicap, national origin, race, religious creed, sex, sexual orientation, or veteran status. Discrimination or harassment against faculty, staff, or students will not be tolerated at The Pennsylvania State University, Bouke Building, University Park, PA 16802-2801; Telephone: (814) 865-4700/V; (814) 863-1150/TTY. The Pennsylvania State University encourages qualified persons with disabilities to participate in its programs and activities. If you anticipate needing any type of accommodation or have questions about the physical access provided, please contact the Westmoreland County Cooperative Extension Office at (724) 837-1402 in advance of your participation or visit. This publication is available in alternative media on request. University. Direct all inquiries regarding the nondiscrimination policy to the Affirmative Action Director